



Quick Start Guide



WRP400 Wireless-G Broadband Router with 2 Phone Ports

Package Contents

- Wireless-G Broadband Router with 2 Phone Ports
- Setup CD-ROM
- Documentation on CD-ROM
- Ethernet Network Cable
- Power Adapter

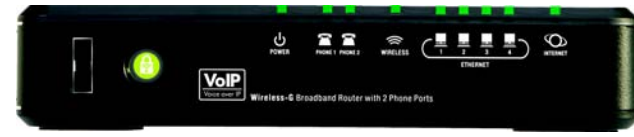
Welcome

Thank you for choosing the WRP400 Wireless-G Broadband Router. The WRP400 is a networking solution that combines telephone, wireless, and wired capabilities.

This guide describes how to physically install your WRP400 and how to set up a basic configuration by using the Setup Wizard.

1 Getting to Know the WRP400

Front Panel



	USB: For information about compatible USB devices, see www.cisco.com/en/US/products/ps10028/index.html
	Wi-Fi Protected Setup (White/Orange): Can be used to automatically configure wireless security for client devices that support Wi-Fi Protected Setup. The button shines white while wireless security is enabled. It shines steady orange if there is an error during the Wi-Fi Protected Setup process.
	Power (Green/Red/Orange): Indicates the status of the following: Power: The LED shines steady green and stays on while the router is powered on. If the LED shines steady red, verify that the correct power adapter is used. If the LED remains red, contact your service provider for support. Self-diagnostic test: During boot-up, the Power LED flashes green to indicate that the self-diagnostic test is in progress. When the test is complete, the LED shines steady green. Initialization of a USB modem: The Power LED flashes green and orange when initialization is in progress. After the device initializes, the LED shines steady green. If the device fails to initialize, the LED continues to flash green and orange.

	Mobile network connection: If a compatible USB modem is installed, the mobile network connection is used as a failover when an Ethernet connection is unavailable. The Power LED indicates the status of the mobile network connection: <ul style="list-style-type: none"> • Steady Green: The mobile network connection is not in use. • Flashing Orange: The WRP400 is attempting to connect to the Internet through the mobile network connection. • Steady Orange: The WRP400 is connected to the Internet through the mobile network connection. • Continuous Flashing Orange: The WRP400 failed to connect to the Internet through the mobile network connection and is trying again.
	Phone 1-2 (Green): The LED shines steadily when an active line is registered to the corresponding phone port. The LED slowly flashes when voicemail messages are waiting.
	Wireless (Green): The LED shines steadily when the wireless feature is enabled. It flashes when the router is actively sending or receiving data over the wireless network.
	Ethernet 1-4 (Green): The LED shines steadily to show that a device is connected through the corresponding port. It flashes to indicate network activity over that port.
	Internet (Green): This LED shines steadily when an Internet connection is made through the Internet port. It flashes to indicate network activity over the Internet port.

Back Panel



	Internet: Use this port to connect the WRP400 to a cable or DSL Internet connection.
	Phone 1-2: Use these ports to connect standard analog telephones to the router.
	Ethernet 1, 2, 3, 4: Use these Ethernet ports to connect the router to wired computers and other Ethernet network devices.
	Power: Use the power port to connect the power adapter.

Side Panel



	Reset: To restore the router's factory defaults, press and hold the Reset button for approximately ten seconds.
	Stand: To place the router in a vertical position, rotate the stand 90 degrees.

2 Installing the WRP400

There are three ways to place the WRP400:

- **Horizontal Placement:** The router has four rubber feet on the bottom panel. Place the Router on a level surface near an electrical outlet.
- **Vertical Placement:** The Router has a stand on the side panel opposite to the antenna. Rotate the stand 90 degrees, and place the Router on a level surface near an electrical outlet.



- **Wall-Mounting Placement:** The Router has four wall-mount slots on its back panel. To mount the router on a wall, follow these instructions:
 - Choose a wall that is smooth, flat, dry, and sturdy. Make sure that an electrical outlet is nearby.
 - Obtain mounting hardware. Suggested hardware is illustrated below (not true to scale).

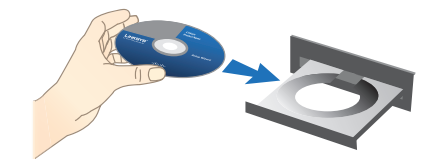
4-5 mm	1-1.5 mm	2.5-3.0 mm

- Drill two holes, 6 cm (about 2-23/64 in.) apart. Insert a screw into each hole and leave 3 mm (about 1/8 in.) of the head exposed.
- Position the router so that two of the wall-mount slots are over the two screws. Slide the Router down until the screws fit snugly into the wall-mount slots.

3 Connecting and Configuring the WRP400

Complete the initial configuration by using the Setup Wizard.

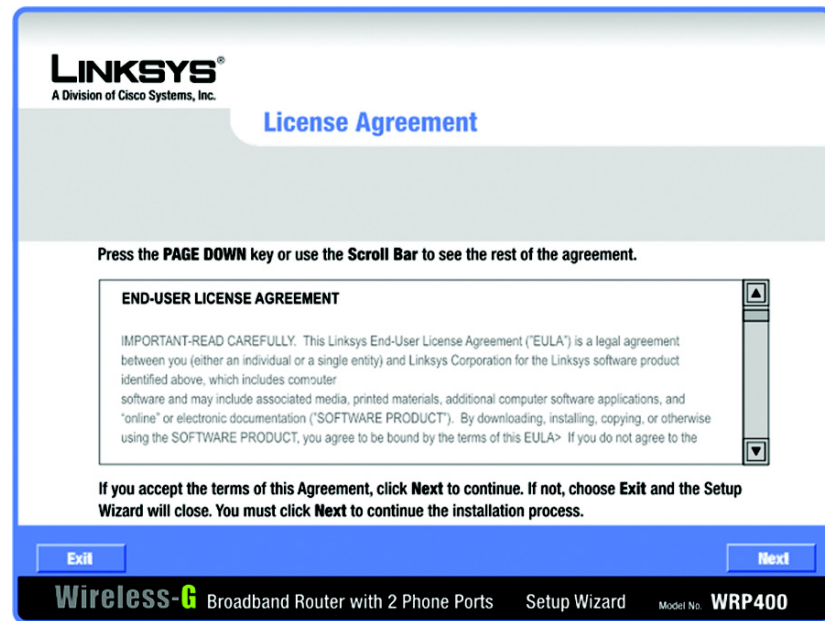
STEP 1 Insert the Setup CD-ROM into your CD-ROM drive.



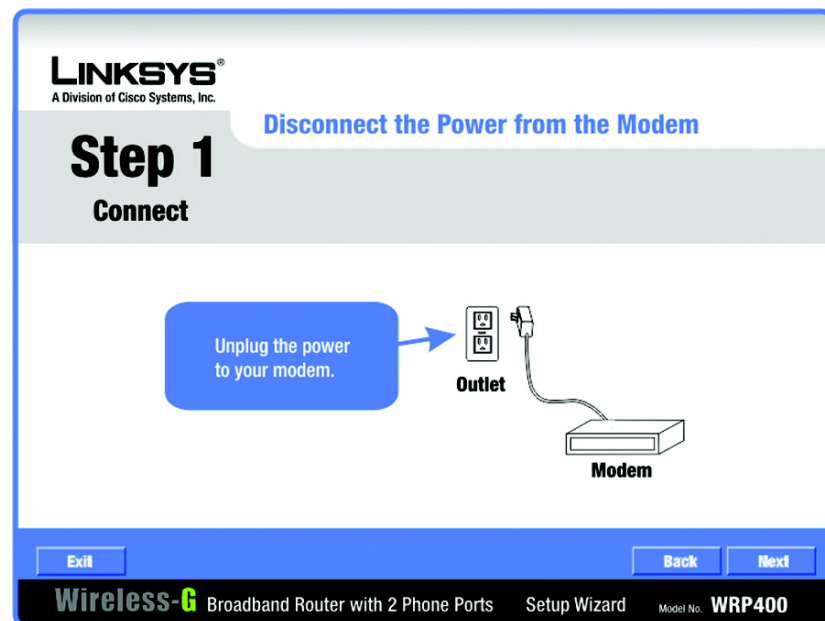
STEP 2 When the Welcome screen appears, select the language that you want to use. Then click the **Click Here to Start** button.



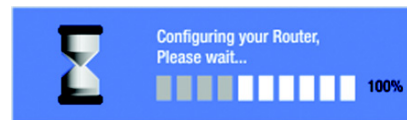
STEP 3 Read the License Agreement, and then click **Next**.



STEP 4 Follow the instructions on each page of the Setup Wizard, and then click **Next**. You can click **Back** to review a previous step.



STEP 5 When you are finished with the final step of the Setup Wizard, a progress message appears. Wait for the Wizard to complete the connection.



STEP 6 When you have finished setting up the router, this screen appears. Click **Finish**.



NOTE For advanced configuration of your router, you can use the built-in administration web server. Connect a computer to the router, and then enter the following URL: **192.168.15.1**.

Log on with **admin** as the user name and the password

To configure more advanced settings and security options, use the administration web server. See the *User Guide* for details.

4 Suggested Next Steps

Upgrading the Firmware

STEP 1 To download the latest firmware, go to the WRP400 product page on Cisco.com: www.cisco.com/en/US/products/ps10028/index.html

NOTE This site requires a login. If you do not have a Cisco.com account, you can register for free.

STEP 2 Click the **Download Software** link. Follow the steps on the screen to download the latest release.

STEP 3 Connect to the WRP400 administration web server, and log on.

STEP 4 Click **Administration > Firmware Upgrade**.

STEP 5 If you see the *Username & Password* screen, enter the User Name and Password provided by your service provider. (The factory default User Name and Password are **admin**.) Then click **OK**.

STEP 6 Click **Browse** to find the firmware file, and then click **Start to Upgrade**. For more information, see the *WRP400 User Guide*.

Installing a Mobile Broadband USB Modem

STEP 1 Make sure that your WRP400 has version 2.0 firmware or higher to support mobile broadband.

STEP 2 Make sure that your Mobile Broadband USB Modem is compatible with the WRP400. To view a current list of compatible Mobile Broadband USB modems, visit the WRP400 product page on Cisco.com: www.cisco.com/en/US/products/ps10028/index.html

STEP 3 Make sure your Mobile Broadband USB modem is activated with a data service, and verify that it can be used on your computer.

STEP 4 Connect a compatible USB Modem into the USB port of the WRP400.

The Power LED on the front of the WRP400 indicates the progress of initialization. After the device initializes, the Power LED shines steady green. When the WRP400 is connected to the Internet through the mobile network connection, the Power LED shines steady orange. For more information, see the **Front Panel** table.

By default, the WRP400 connects to the Internet through the wired Ethernet. The mobile network connection may be configured as a failover connection when the Ethernet connection is unavailable.

NOTE To check the status of the USB Modem, or modify the settings for the mobile network, connection recovery, and failover, you can use the administration web server.

NOTE Voice quality over the mobile network cannot be guaranteed.

5 Where to Go From Here

Support	
Cisco Small Business Support Community	www.cisco.com/go/smallbizsupport
Online Technical Support and Documentation (Login Required)	www.cisco.com/support
Phone Support Contacts	www.cisco.com/en/US/support/tsd_cisco_small_business_support_center_contacts.html
Software Downloads (Login Required)	Go to tools.cisco.com/support/downloads , and enter the model number in the Software Search box.
Product Documentation	
Documentation for Cisco Analog Telephone Adapters	www.cisco.com/en/US/products/ps10024/tsd_products_support_series_home.html
Cisco Small Business	
Cisco Partner Central for Small Business (Partner Login Required)	www.cisco.com/web/partners/sell/smb
Cisco Small Business Home	www.cisco.com/smb

Americas Headquarters
Cisco Systems, Inc.
170 West Tasman Drive
San Jose, CA 95134-1706
USA
<http://www.cisco.com>
Tel: 408 526-4000
800 553-NETS (6387)
Fax: 408 527-0883



Cisco, Cisco Systems, the Cisco logo, and the Cisco Systems logo are registered trademarks or trademarks of Cisco Systems, Inc. and/or its affiliates in the United States and certain other countries. All other trademarks mentioned in this document or Website are the property of their respective owners. The use of the word partner does not imply a partnership relationship between Cisco and any other company. (0705R)

© 2009 Cisco Systems, Inc. All rights reserved.

Printed in the USA on recycled paper containing 10% postconsumer waste.